

dbx ZonePRO IP Integration Note

Manufacturer:	dbx
Model Number(s):	ZonePro 640/1m ZonePro 1260/1m ZonePro 1260/1
g! Core Module Version:	8.1 Build 401.0 Rel
Driver Developer:	Cinematic, Inc.
Document Revision Date:	1.0.1
Control Interface:	IP

Overview & Supported Features

This driver will control the dbx ZonePro's 640/1m, 1260/1 & 1260/1m. A license key is required for use of this driver. Please go to [Cinematic Drivers](#) to purchase the license. Configuring the dbx ZonePro MUST use [ZonePRO GUI Designer v3.2 \(Windows\)](#). Dealer is responsible for configuring the dbx ZonePro and must have knowledge of use.

To use this driver, the dbx ZonePro will need firmware V1.10 or later.

THE FOLLOWING OPTIONS ARE SUPPORTED:

- Master Volume Control (Router & Mixer Master Output)
- Master Mute control (Router & Mixer Master Output)
- Router Input Selection
- Mixer Input Gain Control with text
- Router Zone Off

THE FOLLOWING OPTIONS are not supported:

- Feedback from the dbx unit. Do not use dbx keypads with ELAN.
- Mixer 'Zone Off'. (Output from Mixer is always 'On'. Create an event map to enable mute or set volume level to '0' if audio needs to be disabled.)
- Mixer 'Source Select'. (Output from Mixer is always 'On'. Create an event map to enable mute or set volume level to '0' if audio needs to be disabled.)

Any feature not specifically noted as supported should be assumed to be unsupported.
--

Driver Revision History:

- 1.0.1 - Initial Rollout



g! Configuration

The dbx ZonePro will need to be installed, configured and tested prior to installing the drivers into the ELAN controllers. You will need to locate the MAC address of your ELAN g controller to purchase the driver license key.

Installation Process

With 3rd party drivers, these are not in the driver list from the factory, but are plug-ins. To add the one for dbx ZonePro IP:

1. Download the .EDRVC file
2. Place this file in a folder on your PC
3. In the configurator, navigate to the Media tab
4. Select "Zone Controllers", and select "Add New Zone Controller..."
5. Select search folder, and navigate to the folder in which the driver is located on your PC.

NOTE: It is good to note that once selected, the configurator will always look to this folder for 3rd party drivers so in best practice you should create a folder in which you keep all of your 3rd party drivers in.

NOTE: If you have already set your folder previously and your driver is in said folder (as it should be if you read the above note then the driver will already be in the populated list for you to select from.)

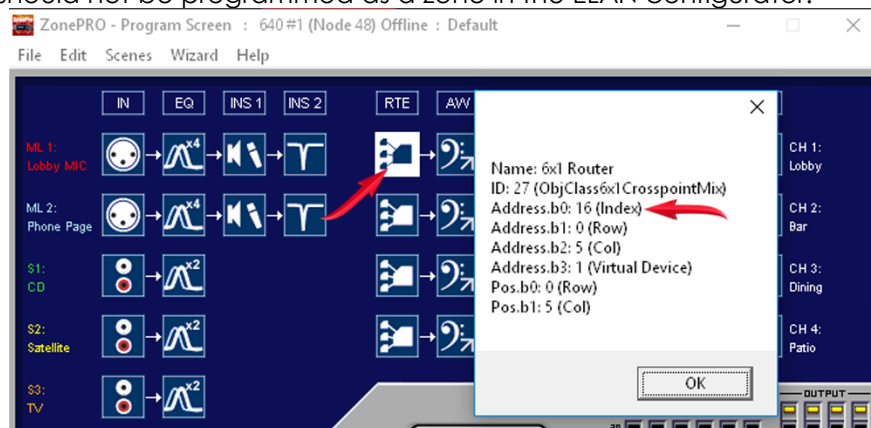
6. Select 'dbx ZonePro xxxx/xx IP from the device type list.
7. The driver should now be loaded into the configurator.
 - A. Locate the Node Address of the ZonePro located in the ZonePro GUI Designer Software. Enter this number in the "Node Address" field.



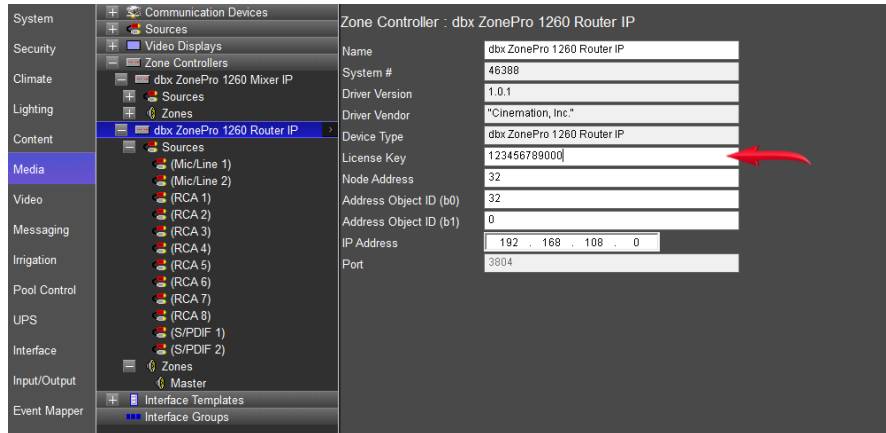


B. Click the top router (RTE), then press [Ctrl]+[Shift]+[o]. The Object ID information window will open. Enter Address b0 (Index) into the "Address Object ID (b0)" field. Then enter Address b1 (Row) into the "Address Object ID (b1)" field.

*NOTE: If the router is configured in stereo or larger where it will use multiple channels, the top channel will be referenced in ELAN as the 'Zone'. The lower channels attached to the stereo (or larger) router should not be programmed as a zone in the ELAN configurator.



Apply. C. Enter the License Key and select the appropriate Communication Device. Click



COMMON MISTAKES

1. Incorrect Node address, license key or Object ID. Driver will not function if ANY of these values are incorrect.
2. Not Synchronizing Venue from the ZonePRO Designer. Very Important! Be sure to deploy the venue in ZonePRO Designer first and test all functions before configuring ELAN driver modules.
3. All feedback is referenced in the ELAN system and cannot be received from the dbx ZonePro units or its accessory ZC Zone Controller keypads. Recommend removing the keypads (if any) and replacing with ELAN touchpanels or keypads. Also, you may want to disable the front panel buttons of the ZonePro.
4. Attempting to configure the Mixer as a zone controller in the dbx ZonePro. 'Zone Off' & 'Source Select' do not function. All inputs and output is to be considered active at all times. Output from Mixer is always 'On'. Create an event map to enable mute or set volume level to '0' if audio needs to be disabled.



For more information about dbx, go to <http://www.dbxpro.com>

ELAN DEVELOPER PARTNER INFORMATION

This ELAN driver was written and supported by:



elan@cinemationinc.com

